





“ An architecturally striking and award-winning home, designed by ZCD Architects and widely recognised for its clarity of design and thoughtful use of light, space and material. ”

Clad in weathered Corten steel, the house has a calm, sculptural presence, sitting confidently yet quietly within its surroundings. Internally, it is arranged across three levels around a central courtyard, drawing natural light deep into the plan and establishing a constant connection between inside and out.

Materiality is central to the experience of the home. Wide plank Dinesen timber flooring runs throughout, creating warmth and continuity. In the main living space, this same material is carried up and over to form the kitchen worktop, reading as a continuous surface and giving the space a distinctive, almost runway-like quality. The kitchen itself features bespoke Dinesen cabinetry, clean-lined and carefully integrated, allowing it to sit comfortably within the architecture.

Industrial steel staircases with Dinesen timber treads provide a strong architectural thread between levels, acting as both functional and sculptural elements. In the bathroom, a more tactile palette has been introduced, with tadelakt walls, stone flooring and Douglas fir cabinetry and bath panelling, bringing a softer contrast while maintaining a consistent material language.









Living spaces are open and connected, defined through subtle shifts in level and volume rather than enclosure. Large openings frame views across the courtyard and garden, reinforcing a sense of depth and flow.

The accommodation comprises three bedrooms, two of which open directly onto the courtyard. The flexible upper level is currently configured as an office and opens onto a private roof terrace, offering a quiet and elevated aspect of the home.

Rushmore Road sits within the heart of Clapton, an area that has quietly become one of East London's most interesting and liveable neighbourhoods. It has a strong sense of creative community, with a growing mix of independent cafés, bakeries, restaurants and traditional pubs all within easy reach.

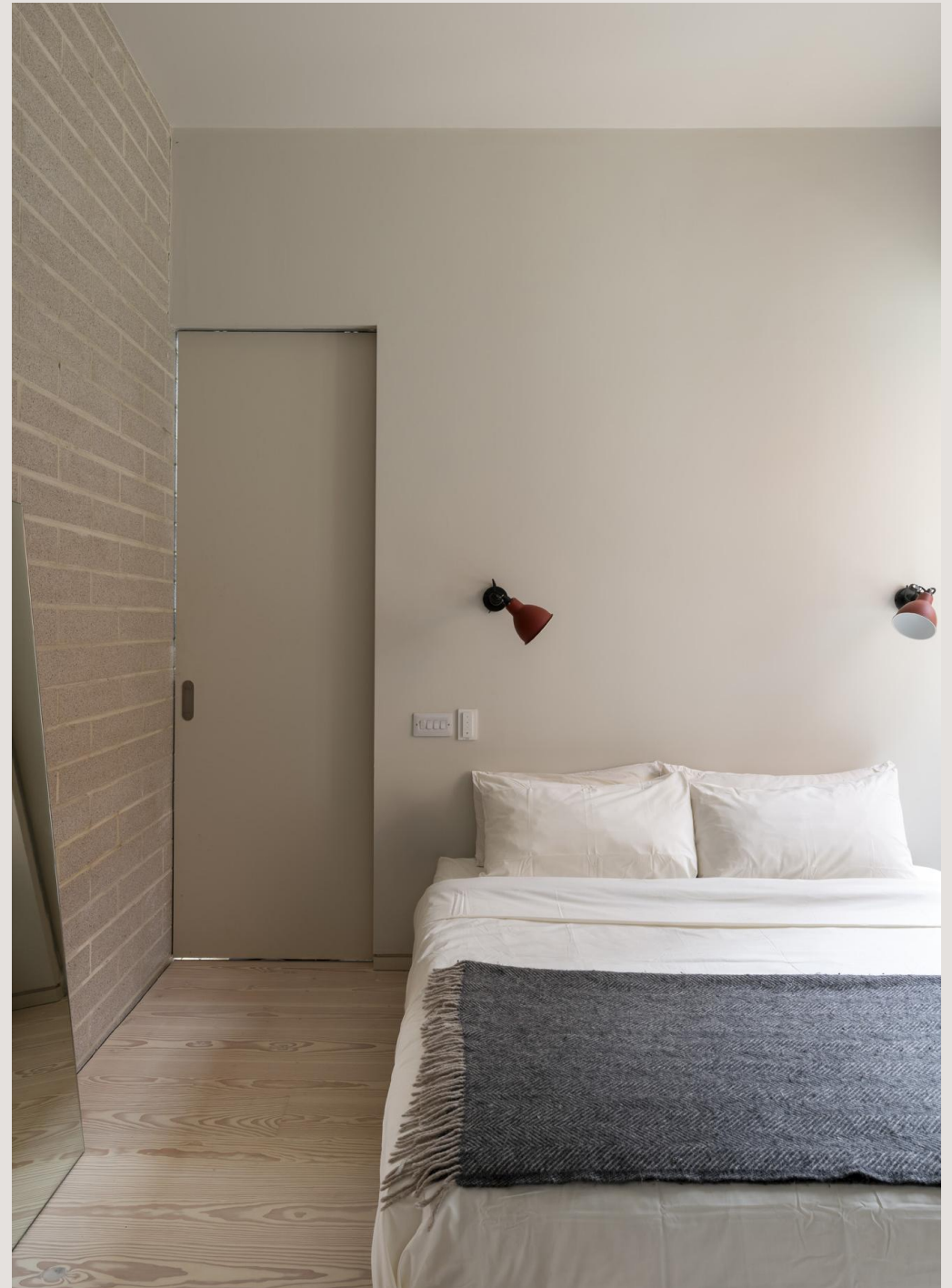
Chatsworth Road is a short walk away, known for its Sunday market, local produce and independent traders, while Lower Clapton Road offers a broader everyday mix of dining and local amenities. Hackney Marshes and the River Lea are also nearby, providing extensive green space, open running routes and access to the canal network, giving a real sense of balance between city living and the outdoors.

The area is particularly well regarded for its schools, with strong local options including Rushmore Primary, Millfields Community School, Clapton Girls' Academy and Mossbourne Community Academy.

Clapton Station provides direct access into Liverpool Street via the Weaver line, while Homerton Station also offers convenient links across London via the Mildmay line. A number of bus routes connect East and central London, and cycling is a natural way to move through the area, with flat routes and easy access to nearby green corridors.

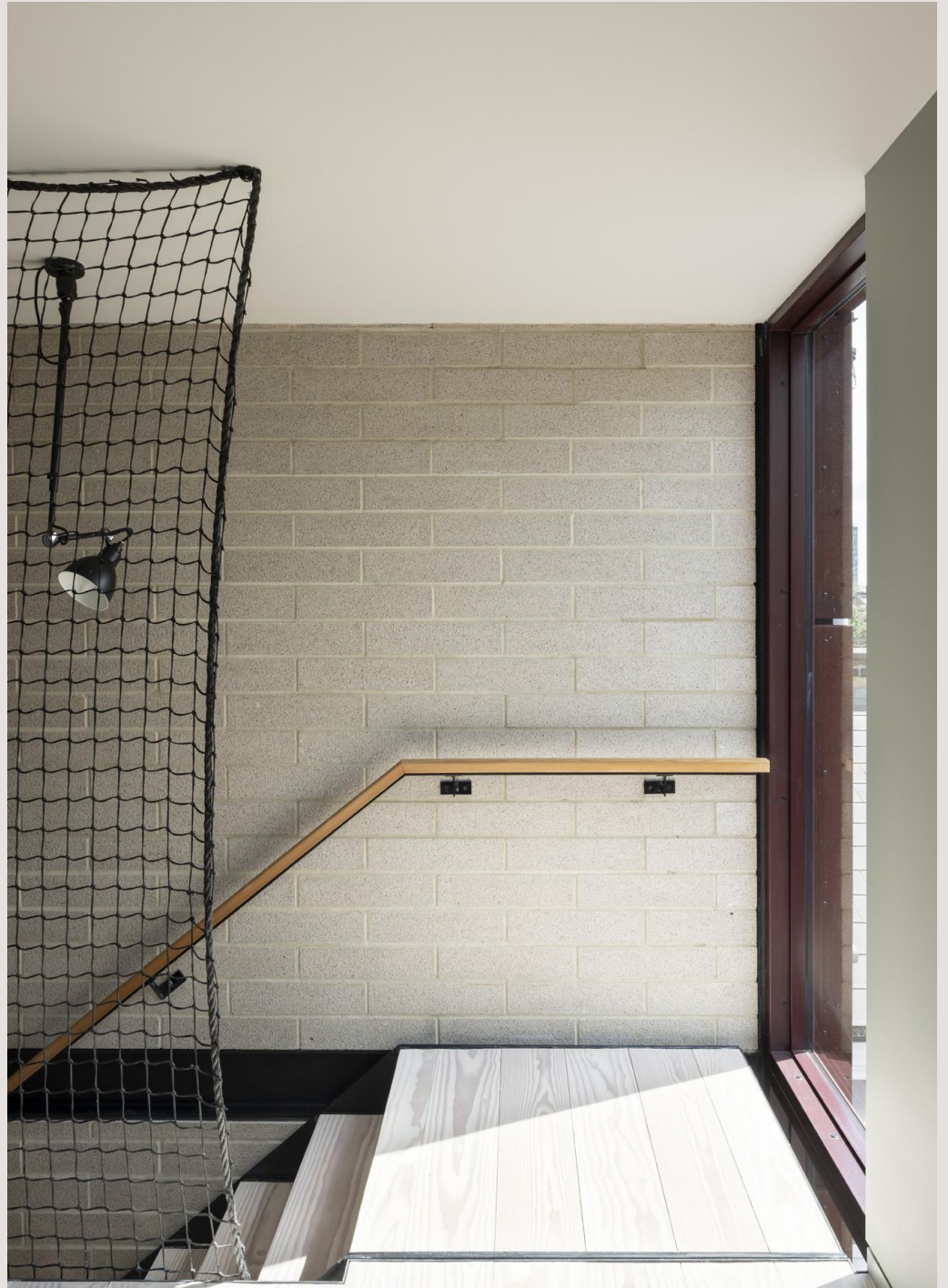




















Rushmore Road E5 Price on application

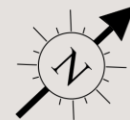
FREEHOLD
COUNCIL TAX BAND – TBC
EPC RATING – TBC

- ZCD Architects designed
- Weathered steel exterior, arranged around central courtyard
- Three bedrooms plus top floor office and roof terrace
- Dinesen flooring with continuous timber kitchen worktop
- Steel staircase with timber treads
- Tadelakt bathroom with Douglas fir detailing
- Smart under floor heating and lighting
- Close to Chatsworth Road, Marshes and schools
- Weaver and Mildmay lines plus strong bus and cycle links

0207 867 3999
hello@storyofhome.co.uk
www.storyofhome.co.uk

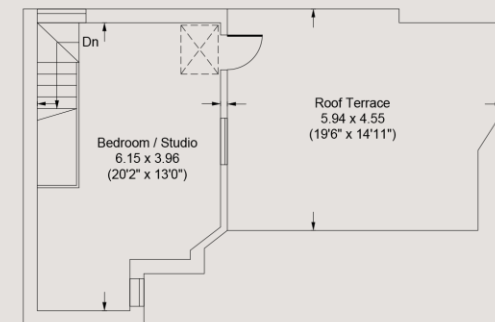
**Story
of Home**
Beautiful homes, by design

Rushmore Road, E5

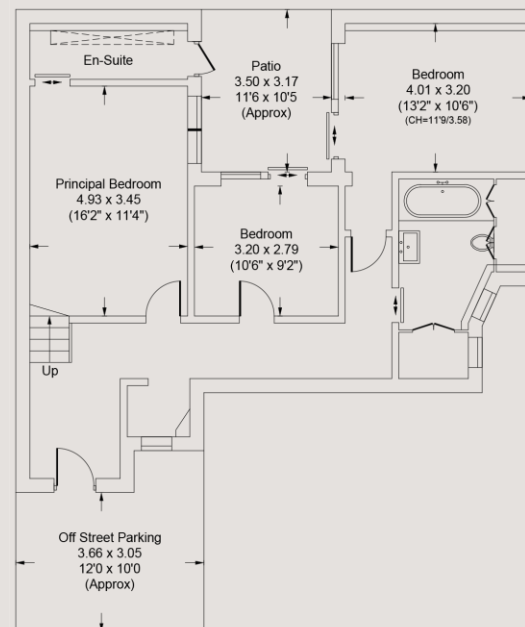


(Not Shown In Actual
Location / Orientation)

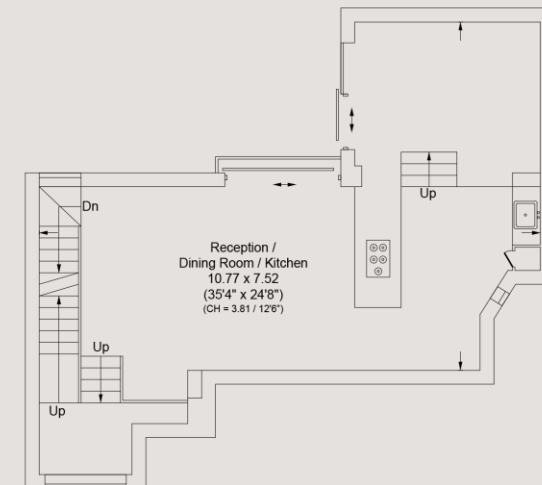
☐ = Reduced head height below 1.5m



Second Floor



Ground Floor



First Floor

Approx Gross Internal Area

1703 Sq Ft - 158.2 Sq M

For Illustration Purposes Only - Not To Scale

Every attempt has been made to ensure the accuracy of this floor plan however measurements are approximate and for illustration purposes only.

Measured in accordance with the RICS code of measuring practice. Not to scale.