

Story *of Home*

Beautiful homes, by design



ALL CONTENT © STORYOFHOMELTD

WWW.STORYOFHOME.CO.UK





“ This exceptional penthouse apartment has been meticulously refurbished by the current owner. With generous lateral living, abundant natural light, and far-reaching rooftop views, it is situated within one of Bloomsbury’s most highly regarded mansion blocks.”

With only six penthouses in Bedford Court Mansions, this represents a rare opportunity to acquire one of the finest flats in the building.

The apartment is centred around a spacious reception room, where a striking curved window floods the space with light throughout the day and offers panoramic views across the surrounding rooftops.

There are two well-proportioned bedrooms, each with an en-suite bathroom, as well as a separate study, providing flexible accommodation for home working or guests. The kitchen and bathrooms have been thoughtfully redesigned, resulting in a home presented in excellent condition throughout.

Bedford Court Mansions is a notably well-managed and impeccably maintained building, with on-site staff and a strong residents association, making it one of the most sought-after mansion blocks in the area.

Located just moments from the British Museum, the apartment is ideally placed for the cultural, culinary, and retail offerings of Bloomsbury, Covent Garden, Soho, and Fitzrovia.

Transport connections are excellent, with Tottenham Court Road (Elizabeth Line, Central and Northern lines), Holborn (Central and Piccadilly lines), and Russell Square (Piccadilly line) all within easy walking distance, providing swift access across the city and beyond.



























Bedford Court Mansions WC1B

£1,395,000

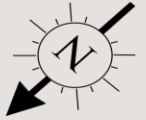
SHARE OF FREEHOLD
COUNCIL TAX BAND - G
EPC RATING - D
SERVICE CHARGE - £9,000 P/A (APPROX)


- Penthouse apartment
- Victorian redbrick mansion block
- Two bedrooms
- Two ensuite bathrooms
- Study
- Meticulously refurbished
- On-site concierge
- Access to Bedford Square Gardens

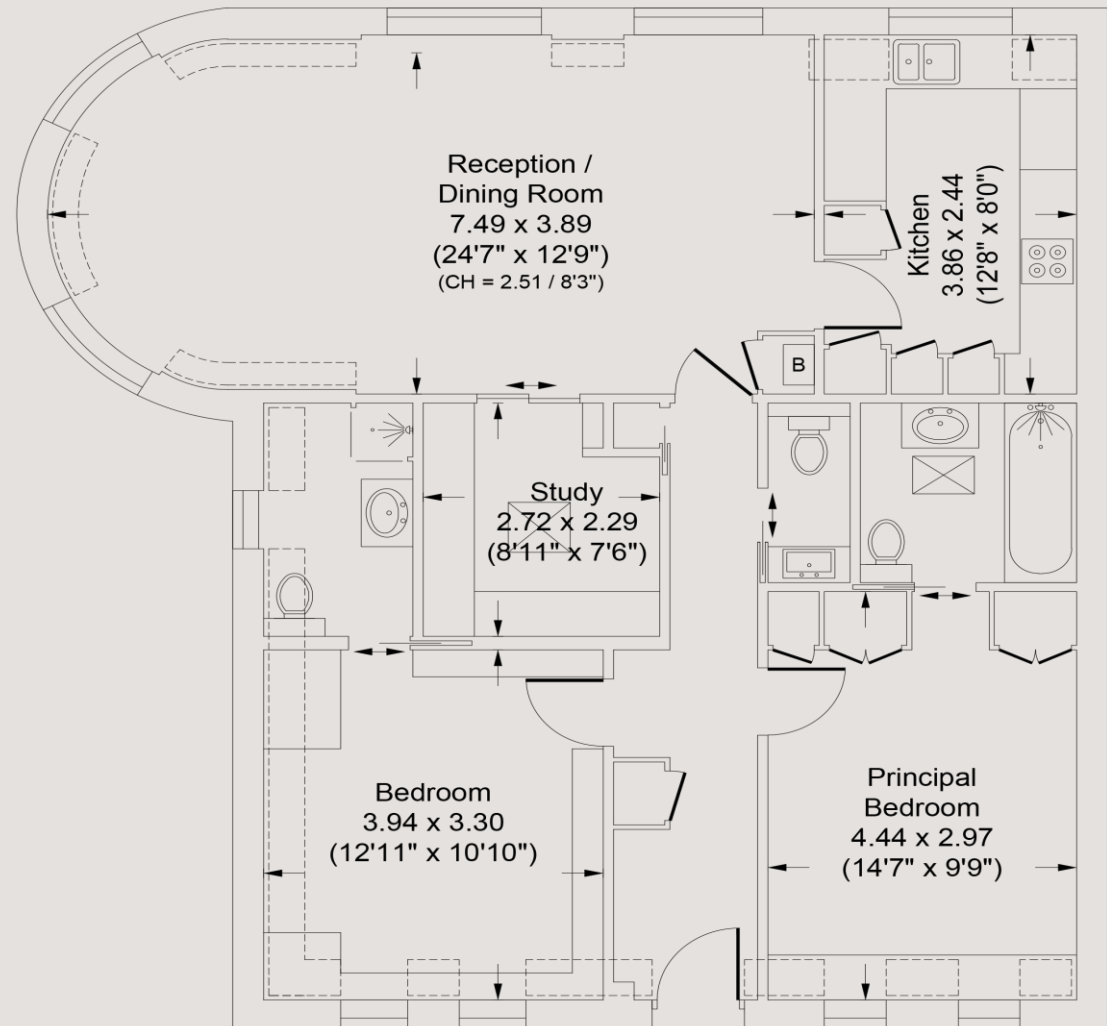
0207 867 3999
hello@storyofhome.co.uk
www.storyofhome.co.uk

**Story
of Home**
Beautiful homes, by design

Bedford Court Mansions, WC1B



 = Reduced head height below 1.5m



Sixth Floor

Approx Gross Internal Area
Limited Use Area

997 Sq Ft - 92.6 Sq M
84 Sq Ft - 7.8 Sq M

For Illustration Purposes Only - Not To Scale

Every attempt has been made to ensure the accuracy of this floor plan however measurements are approximate and for illustration purposes only.

Measured in accordance with the RICS code of measuring practice. Not to scale.