

“ Looking out from the sitting room onto the ever-changing movement in Hyde Park, while being apart from it, brings a sense of calm. ”

A beautifully renovated duplex maisonette, mere moments from historic Hyde Park, offering uninterrupted views from both the formal sitting and dining rooms. Accessed via its own private front door on Park Close, the home allows seamless enjoyment of direct park access. It has been lovingly redesigned and cherished by the current family for nearly forty years.

Upon entering through a set of double front doors, you are welcomed by a spacious, full-length entrance hall laid with elegant stone flooring. The formal sitting room is defined by four large sash bay windows that frame views across South Carriage Drive and the expansive green space beyond. A grand open fireplace, intricate cornicing, and a ceiling height of approximately 2.97 metres create an immediate sense of refinement and scale. For added versatility, the adjacent dining room can be closed off via double pocket doors.





Across the hall, a contemporary kitchen with a functional pantry is equipped with integrated Siemens appliances. Expansive full-height double doors ensure a continuous visual connection from the kitchen through the dining room and out to the park, perfectly framed by twin sash windows. The ground floor also has generously sized separate study, which could be used as a fourth bedroom, alongside a lavatory and separate utility room.

A minimalist double quarter-turn staircase with glass balustrades leads downstairs to three double bedrooms, two of which overlook the landscaped garden that separates the home from the park. The principal suite features generous built-in wardrobes, a stylish en-suite and a ceiling height of approximately 2.63 metres. A dedicated shower room serves the remaining bedrooms, while the third bedroom is enhanced by a private lightwell.





Tucked away on the quiet and discreet Park Close, this maisonette enjoys exceptional privacy while being set in the very heart of Knightsbridge; one of London's most prestigious neighbourhoods. Just moments from world-renowned designer boutiques, five-star hotels, and acclaimed restaurants, the location perfectly blends refined elegance with vibrant city living.

Just steps from the front door, direct access into Hyde Park opens to over 350 acres of beautifully landscaped gardens, tree-lined avenues, and the iconic Serpentine. Excellent transport links are close by, with Knightsbridge and Hyde Park Corner underground stations a short walk away, connecting you effortlessly to the rest of the capital.













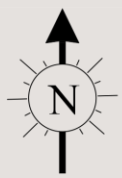












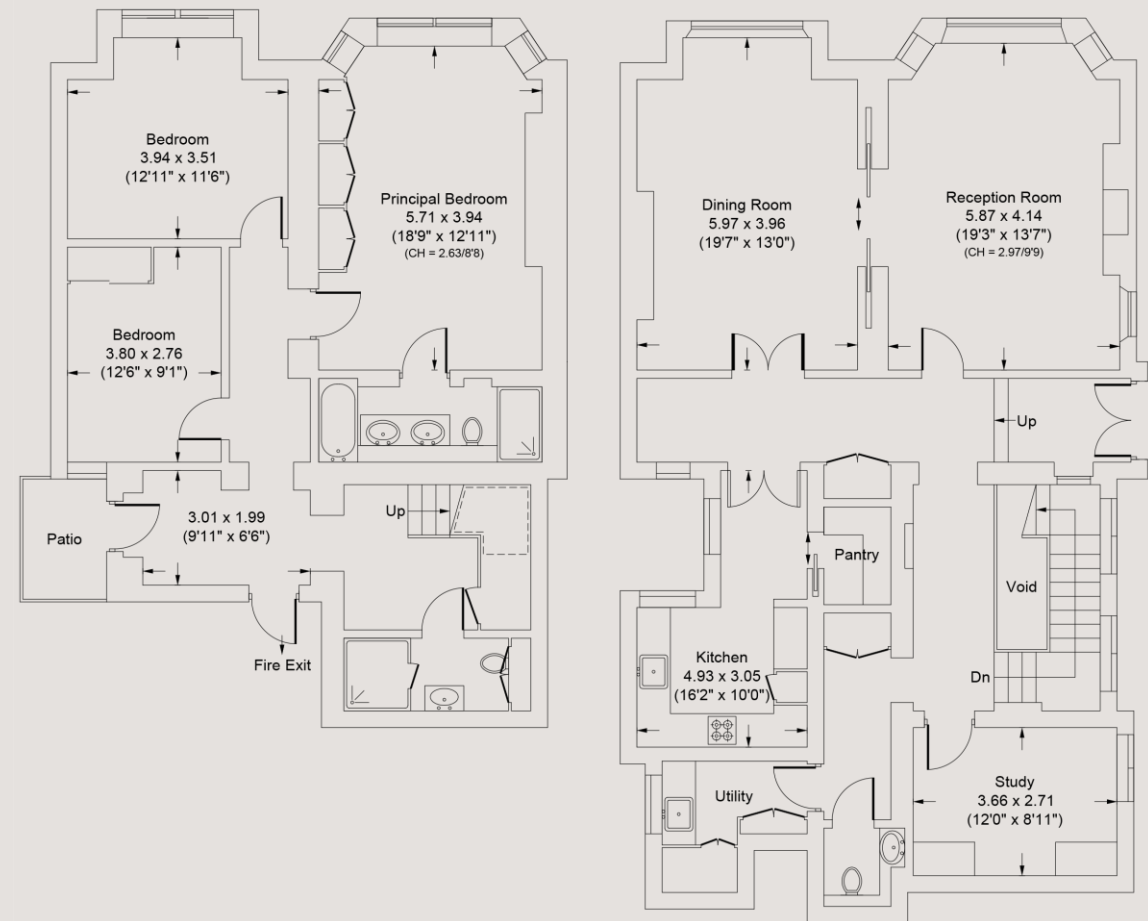
Park Close, Knightsbridge

SW1X

£3,500,000

LEASEHOLD - 144 years (approx.)
 COUNCIL TAX BAND - H
 EPC RATING - D
 SERVICE CHARGE - nil
 GROUND RENT - £1,500 per annum

- Three bedroom
- Two bathroom
- Two reception rooms
- Study or fourth bedroom
- Grand open fireplace
- Intricate cornicing
- High ceilings throughout
- Private front door
- No service charge
- Direct park access
- Uninterrupted views of Hyde Park
- Close to Knightsbridge Underground Station



Lower Ground Floor

Raised Ground Floor

0207 867 3999

hello@storyofhome.co.uk

www.storyofhome.co.uk

Story of Home

Beautiful homes, by design

Approx Gross Internal Area
 (Excluding Void)
 Limited Use Area

2232 Sq Ft - 207.4 Sq M

64 Sq Ft - 6.0 Sq M

For Illustration Purposes Only - Not To Scale

Every attempt has been made to ensure the accuracy of this floor plan however measurements are approximate and for illustration purposes only.

Measured in accordance with the RICS code of measuring practice. Not to scale.