





“ An impressive three-bedroom, two-bathroom residence with south facing terrace, positioned on the upper floors of an attractive white-stucco building.

”

Belsize Park Gardens is one of the most popular and desirable streets in Belsize Park. Conveniently located close to Belsize Village and Haverstock Hill.

The apartment occupies the second and third floors of an attractive white-stucco building.

There are three bedrooms and two bathrooms on the second floor. On the third floor there is a spacious open plan kitchen and reception room plus utility room.

condition, there is good storage throughout, and the reception room benefits from vaulted ceilings making the space feel very bright. There is also a south facing balcony.

The amenities of Hampstead and Primrose Hill are both a short walk away; excellent transport links are provided by Belsize Park and Swiss Cottage Underground Stations.

The property is in excellent























Belsize Park Gardens

NW3

£5,700 per month

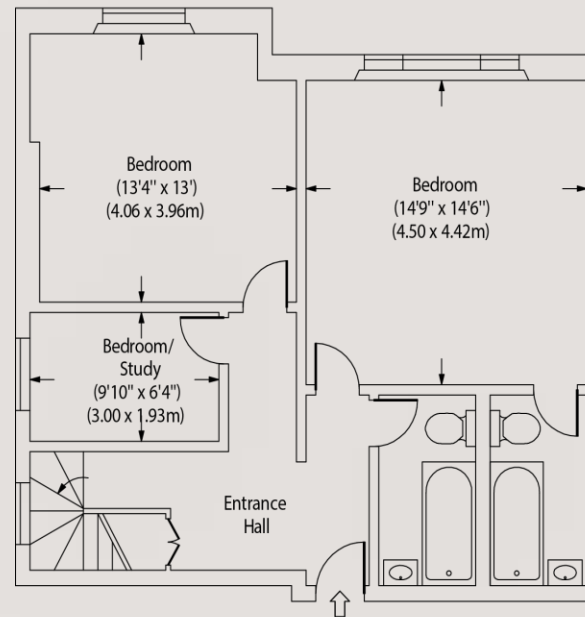
AVAILABLE AUGUST 25
PART FURNISHED
COUNCIL TAX BAND H
EPC RATING E
HOLDING DEPOSIT £1315
SECURITY DEPOSIT £7892

- Three bedrooms
- Two bathrooms
- Vaulted ceilings
- Excellent storage
- South facing terrace
- Close to Belsize Village

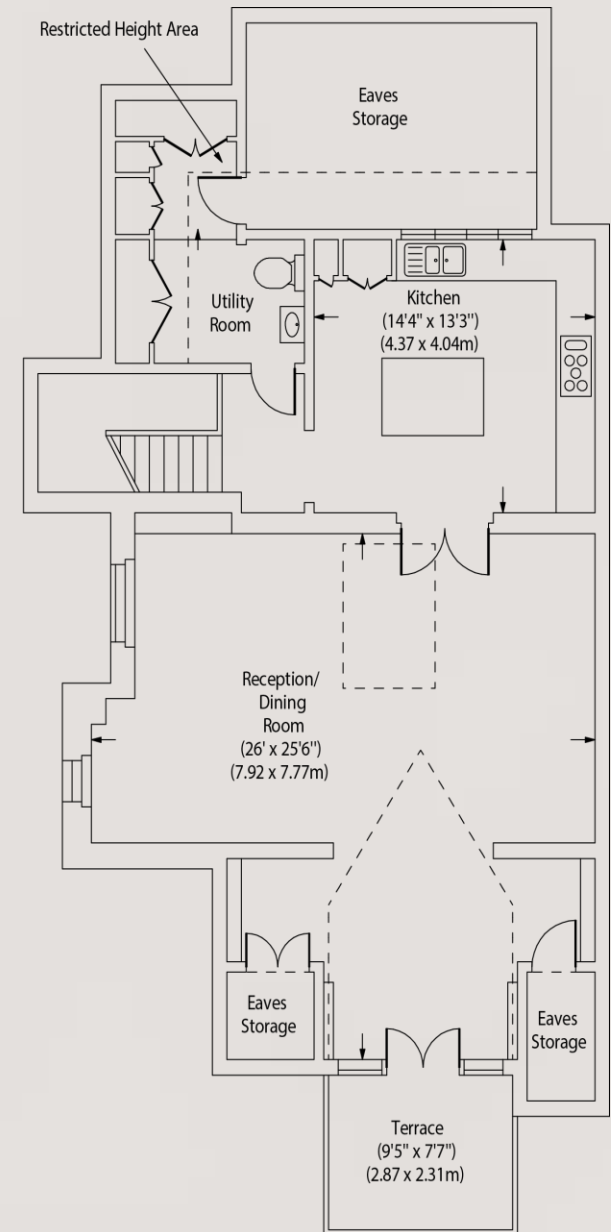
0207 867 3999
hello@storyofhome.co.uk
www.storyofhome.co.uk

Story of Home

Belsize Park Gardens, NW3



Second Floor



Third Floor

Approx Gross Internal Area 1656 Sq Ft - 154.04 Sq M
Approx. Floor Area Including Restricted Heights 1879 Sq Ft - 174.79 Sq M

Every attempt has been made to ensure the accuracy of this floor plan however measurements are approximate and for illustration purposes only.