

# Story of Home

Beautiful homes, by design



ALL CONTENT © STORYOFHOMELTD

WWW.STORYOFHOME.CO.UK



“ A two-bedroom, two-bathroom apartment on the fourteenth floor of this landmark building designed by Alison Brooks Architects, with interiors by Conran and Partners. ”

With high ceilings, expansive windows, and deliberately open layouts to create a sense of space, the apartment is designed to bring the outdoors in.

The apartment has spectacular southerly views over Lewis Cubbitt Park and London.

Cadence sits in a true urban oasis, with an abundance of squares, parks, and new landscape planting. Just a moment's walk away are Coal Drops Yard, Granary Square, Pancras Square, Gasholder Park and the Regent's Canal. Outside your front door is Lewis Cubbitt Park.

Alison Brooks Architects is an award-winning London-based practice specialising in urban regeneration and creating public buildings for the arts.

They designed a series of signature arches for Cadence forming a contemporary colonnade at the base of the building and a playful crown at

the top – a modern take on classical architecture.

King's Cross is the best-connected destination in London, boasting two mainline stations (King's Cross and St Pancras), international connections and six underground lines.

With Eurostar on your doorstep and all five of London's airports less than an hour away, King's Cross is unparalleled for convenient travel.

This is a neighbourhood buzzing with creative energy, culture, thriving businesses and worldclass eateries. The district brings together a host of brilliant chefs creating some of London's most exciting dining destinations.

Book yourself a table at 'the most beautiful restaurant in the world' – German Gymnasium, try a Levantine inspired menu at Arabica, enjoy the delights of Lina Stores' delicatessen, or visit Michelin-starred Barrafin.







AL SUNG

AL DRO

THE ENERGY

# Cadence, Coal Drops Yard

# N1C

## £2,400,000

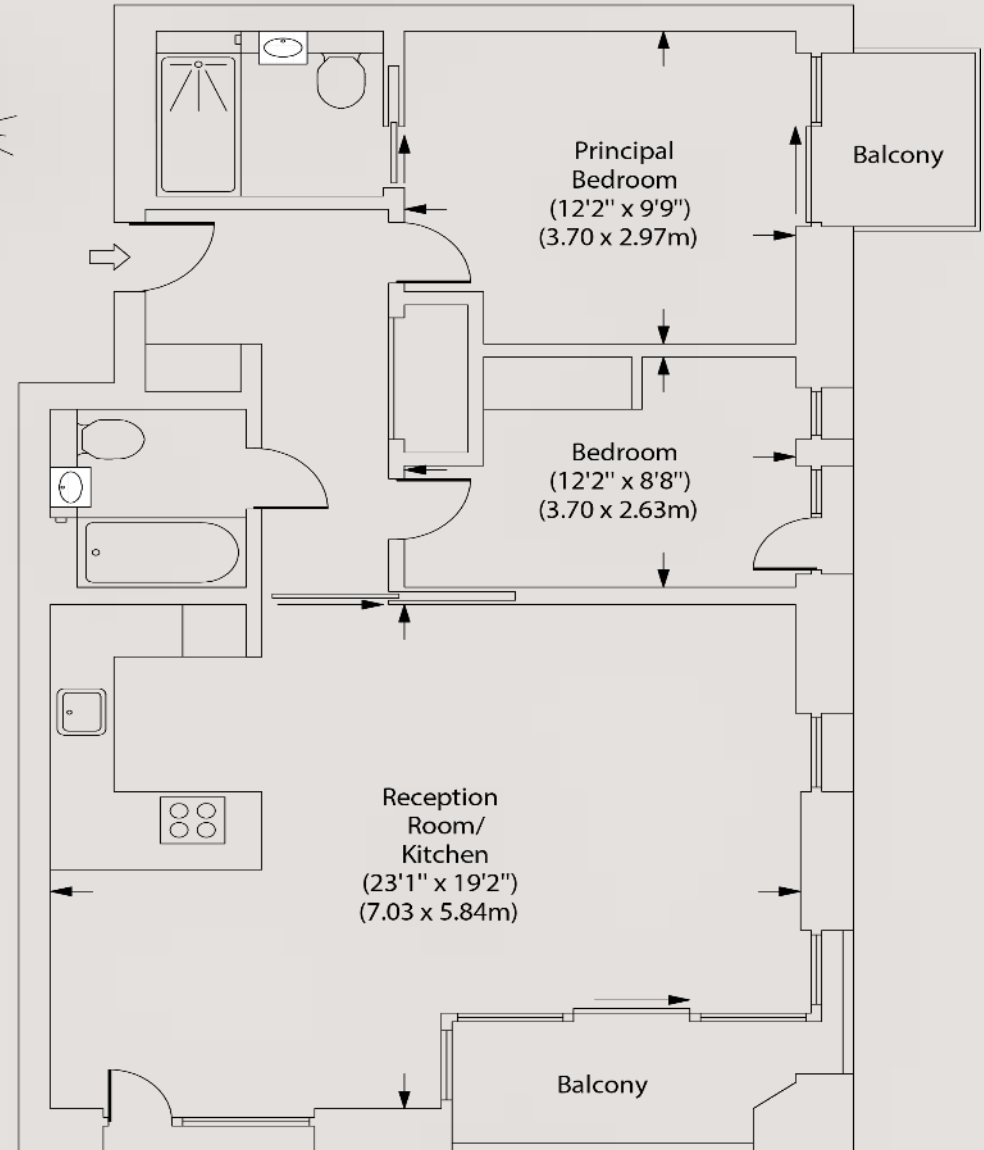
LEASEHOLD 250 YEARS  
COUNCIL TAX BAND TBC  
EPC RATING B

- Architecturally Designed
- Two Bedrooms
- Open Plan Kitchen/Reception Room
- Three Bathrooms
- Balcony
- Concierge
- Residents Gym
- Residents Lounge
- New Build

0207 867 3999  
hello@storyofhome.co.uk  
www.storyofhome.co.uk

# Story of Home

Cadence,  
Lewis Cubbitt Walk, N1C



Fourteenth Floor

Approx Gross Internal Area

902 Sq Ft - 83.8 Sq M

Every attempt has been made to ensure the accuracy of this floor plan however measurements are approximate and for illustration purposes only.

Measured in accordance with the RICS codes Of measuring practice. Not To Scale