

# Story of Home



ALL CONTENT © STORYOFHOMELTD

WWW.STORYOFHOME.CO.UK



“ This three-bedroom apartment is situated on the eighteenth and nineteenth floors of the infamous Grade II\* listed building designed by Erno Goldfinger. Built in the late 1960’s and brutalist in its design, Trellick Tower stands tall on west London's skyline. ”

**H**ungarian-born Ernő Goldfinger helped to popularise the Modernist movement in Britain, pioneering a unique style of architecture.

One of his first projects, Willow Road – a road of terraced houses in Hampstead - epitomises the Modernist aesthetic.

His work really took off following the Second World War, as local councils in Britain began to recognise the potential of Modernist concrete tower blocks in solving the housing shortage.

Trellick Tower is a testament to Goldfinger's unwavering design philosophy, encapsulating the essence of his brutalist style.

The apartment is entered from the eighteen floor with the living accommodation starting on the nineteenth floor.

The Interior has been recently designed and renovated by design studio [Krokalia](#), to perfectly complement the buildings' exterior. Original features such as metal storage heaters and metal door frames have been meticulously refurbished.

Materials used for the renovation also reflect the Modernist style of the building, such as the dark oak parquet and concrete flooring.

The apartment has three bedrooms, a living room, kitchen, bathroom, and separate WC. All three bedrooms have impressive views across West London – with Regent's Canal, and the BT Tower visible from the main and third bedrooms.

The kitchen has been designed and finished to the highest standard using white Zellige tiles, solid cedar wood panels and white quartz worktops. This same combination of materials are used

in the bathroom and WC, to achieve a cohesive 'flow' between the rooms and adding to the sense of space.

Trellick Tower is located on Golborne Road, Notting Hill. The road is famous for its antiques shops and markets, that attract locals and tourists alike on Fridays and Saturdays.

The area has endless restaurant and cafe options to choose from, some of our favourites are Strakers on Golborne Road, Fez Mangal on Ladbroke Grove, Cocotte on Westbourne Grove and Lisboa Patisserie also on Golborne Road.

**“The apartment has three bedrooms, a living room, kitchen, bathroom, and separate WC. All three bedrooms have impressive views across West London – with Regent’s Canal, and the BT Tower visible from the main and third bedrooms.”**









# Trellick Tower

# W10

# £900,000

LEASEHOLD - APPROX 88 YEARS REMAINING  
SERVICE CHARGE £690 PER ANNUM (ARRPOX)  
GROUND RENT - £10 PER ANNUM (APPROX)  
COUNCIL TAX BAND C  
EPC RATING TBC

- Three bedrooms
- One bathroom
- Guest W/C
- Iconic building
- Eightieth and nineteenth floor
- 270-degree views
- Refurbished by studio [Krokalia](#)
- Concierge

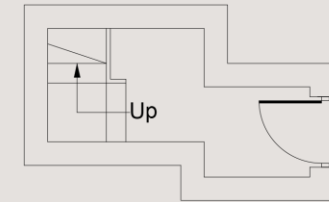
0207 867 3999

hello@storyofhome.co.uk

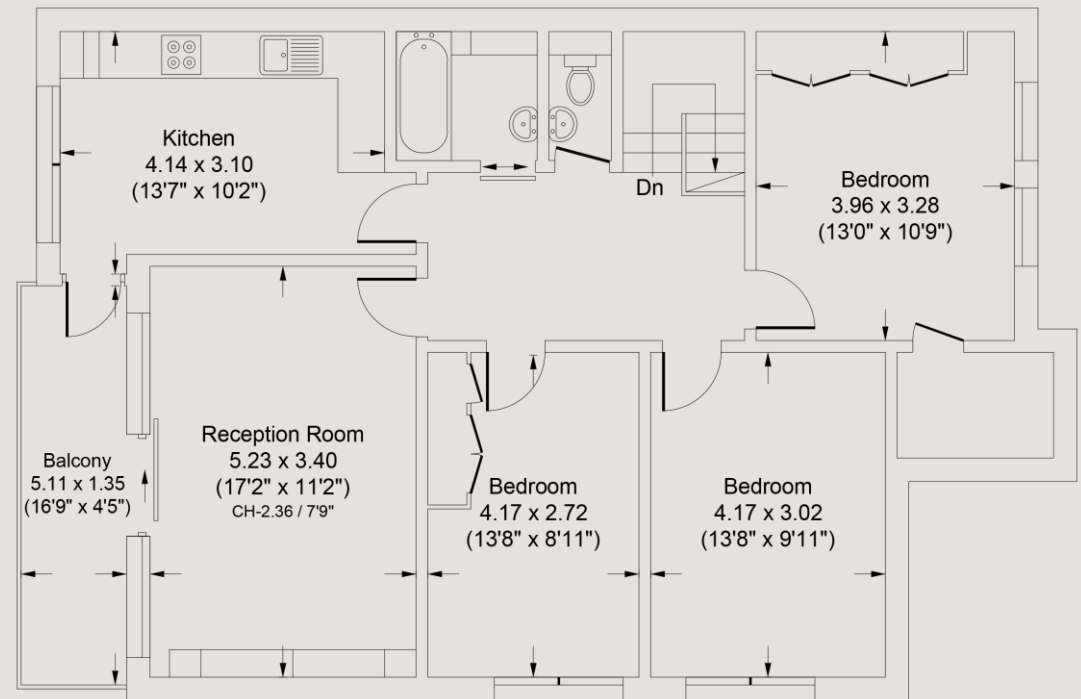
www.storyofhome.co.uk

**Story  
of Home**  
Beautiful homes, by design

Trellick Tower, Golborne Road, W10



Eighteenth Floor



Nineteenth Floor

Approx Gross Internal Area

**1026 Sq Ft - 95.3 Sq M**

For Illustration Purposes Only - Not To Scale

Every attempt has been made to ensure the accuracy of this floor plan however measurements are approximate and for illustration purposes only.

Measured in accordance with the RICS code of measuring practice. Not to scale.