

Story of Home



ALL CONTENT © STORYOFHOMELTD

WWW.STORYOFHOME.CO.UK

The distinctive white stuccoed buildings of Queens Gate Terrace run from Gloucester Road to Queens Gate in South Kensington.

The street was built in the early 1800's by Master Builders Charles Aldin and his predecessor William Harris, together they designed and built many of the magnificent terraces in South Kensington and Earls Court. Queens Gate Terrace is arguably one their grandest designs.

Georgian architecture is known for its elegance and timeless sophistication, and this apartment does not disappoint. Many of the original features have been retained and enhanced. There is excellent ceiling height throughout the property, with beautiful cornicing and alcoves that add to a sense of grandeur.

The apartment is accessed on the ground floor, via a private street entrance opening into a wonderful entrance hall. The private entrance gives the feeling of walking into a house and as the apartment is split over two levels this allows separation and privacy between the entertaining rooms and bedrooms.

On the ground floor there are two grand reception rooms overlooking Queens Gate Terrace, and a magnificent dining room to the rear of the

- Two grand reception rooms
- Magnificent dining room
- Accessed via private street entrance
- Apartment is split over two levels
- Four bedrooms
- Four bathrooms all en-suite
- Large kitchen
- Separate utility room
- Guest powder room
- Herringbone wooden floors

apartment. There is also a large kitchen, guest toilet, and double bedroom with en-suite bathroom on the ground floor.

On the lower ground floor there are a further three double bedrooms - all with en-suite bathrooms, and a separate utility room. The apartment benefits from a porter service, and has access to two separate patio gardens, although these are not demised.

Queens Gate Terrace is moments from the shops, restaurants, and bars of Kensington High Street, Gloucester Road & Cromwell Road.

This cosmopolitan area is home to many internationally acclaimed hotels, shops and restaurants. The Conran Shop, in the former Michelin building, is one of London's most famous and inspiring interiors shops. In the same building, the Bibendum Oyster Bar and Restaurant, remains a local favourite after more than 25 years.

Many cultural destinations are within walking distance, including the Royal Albert Hall, Victoria & Albert Museum, Science Museum and Natural History Museum.

The nearest underground stations are Gloucester Road, High Street Kensington and South Kensington. (Piccadilly, District and Circle Lines).

- High ceilings and grand period features
- Air conditioning in bedrooms
- Access to two patio gardens (not demised)
- Porter services
- Short walk to High Street Kensington, Gloucester Road and Cromwell Road.
- Close to Hyde Park, and internationally acclaimed cultural and educational institutions.
- Close to South Kensington, High Street Kensington and Gloucester Rd Underground

Queens Gate Terrace

SW7

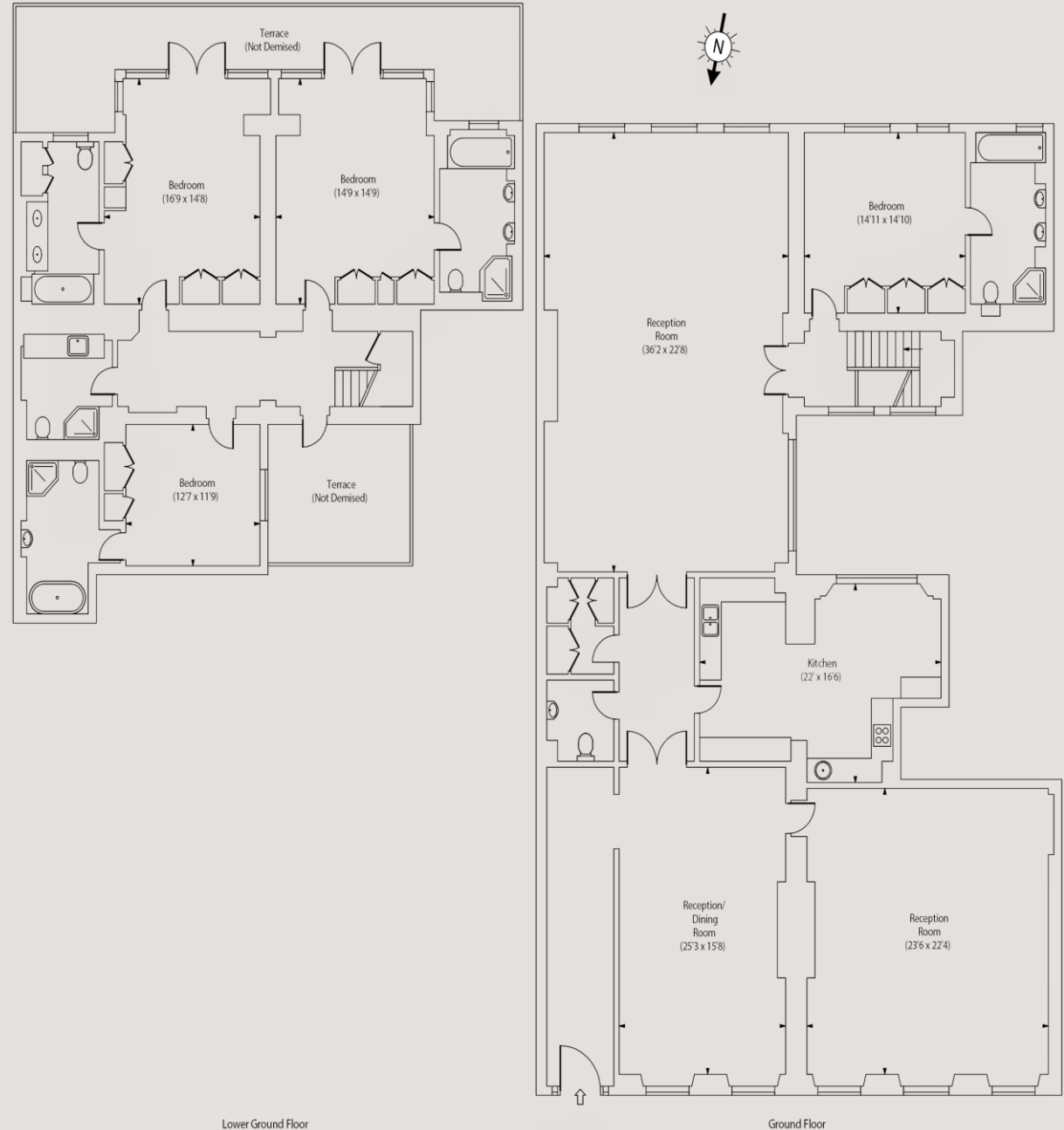
£7,000,000

LEASEHOLD - 978 YEARS REMAINING (APPROX)
SERVICE CHARGE - £30,000 PA (APPROX)
COUNCIL TAX BAND H
EPC RATING D

0207 867 3999
hello@storyofhome.co.uk
www.storyofhome.co.uk

Story
of Home

Queens Gate Terrace



Lower Ground Floor

Ground Floor

Approx Gross Internal Area 4400 Sq Ft - 408.76 Sq M

Every attempt has been made to ensure the accuracy of this floor plan however measurements are approximate and for illustration purposes only.
Measured in accordance with the RICS codes of measuring practice. Not To Scale