





“ The Belsize Park Firehouse has been meticulously refurbished to create a distinctive collection of exclusive one, two, three and four bedroom apartments. ”

Rarely does an opportunity arise to create an iconic residential landmark in London. Belsize Park Fire Station was officially opened in 1915. Designed by Charles Canning Windmill, an architect of the London County Council Architects Department, it was awarded it's Grade II\* listing by English Heritage over 40 years ago, described as "the most distinctive and original of a remarkable series of fire stations built".

The Belsize Park Firehouse has been meticulously refurbished to create a distinctive collection of exclusive one, two, three and four bedroom apartments. The thoughtful and contemporary design compliment the heritage of

this fine building. Retaining Arts and Crafts period architecture, preserved with meticulous attention to detail throughout, adding to the building's rich legacy for future generations.

Belsize Park Firehouse is within a short walk to both Primrose Hill to the south and Hampstead to the north. On England's Lane, just a few minute's walk, there are some great café's bakeries and restaurants.

The development is conveniently positioned between Belsize Park (Northern Line) and Swiss Cottage (Jubilee Line) underground stations, together with an outstanding range of schools.

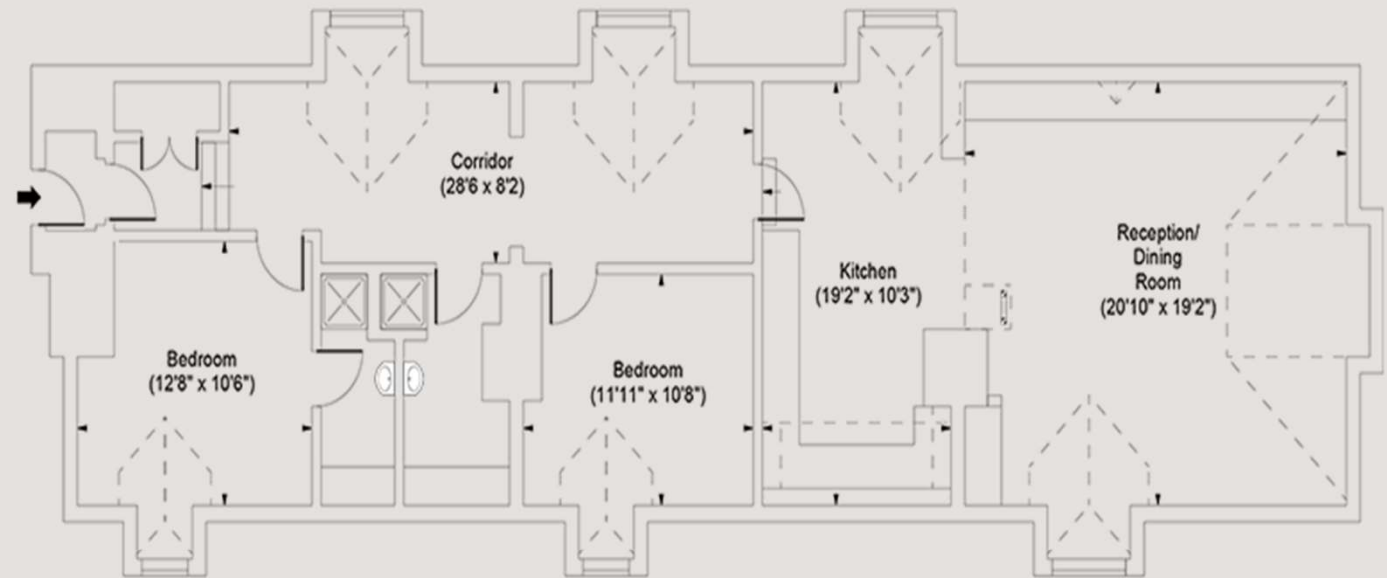


# Belsize Fire House, NW3

## £1,700,000

LEASEHOLD - NEW 999 YEARS  
SERVICE CHARGE - TBC

- Two Bedrooms
- Two Bathrooms
- Top Floor With Lift
- Vaulted Ceilings
- Mezzanine Level
- Porter



Second Floor

Approx Gross Internal Area **1359 Sq Ft - 126.25 Sq M**

Every attempt has been made to ensure the accuracy of this floor plan however measurements are approximate and for illustration purposes only.

Measured in accordance with the RICS codes of measuring practice. Not To Scale

0207 867 3999

hello@storyofhome.co.uk

www.storyofhome.co.uk

Story  
of Home